

COME TO LIFE®







# The Daily Ritual.

When you immerse yourself in a Caldera® spa, you immediately feel the world melt away. Emerge feeling restored, centered, and ready to appreciate life's simple joys and meaningful experiences. We invite you to experience a transformation that will prepare you for life's next adventure.

**Come to Caldera. Come to Life.®**

04	Welcome to Wellness
06	Caldera Difference
14	Clean, Welcoming Water
18	Hot Tub Circuit Therapy®
20	Energy Efficiency
22	Discover Your Perfect Fit
24	Utopia® Series
28	Paradise® Series
32	Vacanza® Series
36	Series Comparison
38	Hot Tub Essentials
40	Caldera Spas App
42	Entertainment & Accessories
44	Cold Plunge
48	Owner Testimonials
50	Specifications
56	Our Promise to You



# Welcome to Wellness.

We've designed the hot tub experience to be centering, restorative, healing, and transformative.



## BE PRESENT

Your hot tub can provide a daily ritual in a meditative state, void of distractions. Feel the stress of the everyday melt away as you recenter yourself. It's peace and tranquility, available always.

## MOVE EASIER

When you soak in a Caldera® spa, the hot water makes your muscles more pliable, which leads to greater flexibility and overall physical well-being so you can continue to do all the activities you love, longer.

## FEEL BETTER

While the water's buoyancy reduces stress on joints and muscles, warm water massage increases circulation; relaxes muscles, ligaments, and tendons; and stimulates the release of endorphins, the body's natural pain reliever.

## SLEEP DEEPER

A hot tub is an ideal sleeping tool, working with your body's temperature and natural rhythms. As you enter, your body temperature increases. As you exit, it begins to drop, signaling to your brain that it's time to sleep.

## STAY CONNECTED

With family and friends, your hot tub provides a dedicated space that can draw you closer. Social connection is key to well-being and can positively affect your health.







# The Caldera® Difference.



## COMFORT

Every contour, meticulously considered. Every curve, designed to work precisely with your body. Every feature, meant to create a sense of peace, immersion, and presence within your experience.

## DESIGN

We craft each detail to be stunning and inviting. With beautiful color choices, contemporary cabinet designs and sweeping contours, we've designed the perfect hot tub: yours.

## PERFORMANCE

Your hot tub should always be ready when you are, with water that's fresh and clean. Our focus on performance allows you to simply enjoy the experience.







# Comfort.

Deep, cradling seats and a textured Foot Ridge® help you stay relaxed and seated even when enjoying powerful jets. Perfectly positioned hydrotherapy jets melt your tension away.



## BEST SEAT IN THE HOUSE

You'll notice the difference. Feel comfortably supported as the seat's design works with the buoyancy of the water to ease pressure off body parts that are under stress all day.

## YOUR MESSAGE, YOUR WAY

Each Caldera spa is carefully and purposely designed to deliver the right type of massage where it's needed the most, whether it's your lower back or the soles of your feet. Our exclusive Hot Tub Circuit Therapy® system has a station just for you.



THE MOST ESSENTIAL ELEMENT





# Design.

Every contour a choice. Every innovation, crafted to help you transform.  
Every decision, made to please. The result? A personal retreat, where you  
can rejuvenate and transform your body and mind.



## INTERIOR EXCELLENCE

We pay special attention to curves and contours. Our shapes are meant to follow your shape. Our curves are designed to support and cradle yours. It's comfort, designed with purpose.

## EXTERIOR DESIGN

A Caldera® spa should enhance and complement your surroundings. From traditional to modern, from substantial to sleek, all are available in contemporary colors and textures intended to delight.

## MAKE IT YOURS

With a range of color and cabinet choices, lighting features, and entertainment options, it's easy to find the right hot tub that transforms your environment as it helps transform your world.



IT'S IN OUR DNA





# Performance.

Nothing should stand between you and daily enjoyment of your spa.  
Our materials are selected based on their ability to stand up to everyday use, so your hot tub is ready whenever you are.



## REMARKABLY SIMPLE WATER CARE

With Caldera® Spas, you have access to fresh and clean water without handling chemicals whenever you're ready for a soak.

## MORE POWER WHEN IT'S NEEDED

Whether you're in the mood to feel the gentle flow of water, or need a deeper massage, a Caldera spa provides you with what you want.

## ENERGY EFFICIENT

We're committed to making Caldera Spas one of the most energy-efficient hot tubs available, to minimize your energy usage and save you money.

## COMMAND AND CONTROL

The touchscreen Advent® panel gives you intuitive control of spa functions right at your fingertips.



Advent touchscreen panel (Utopia® Series)



ALWAYS READY



# Clean, Welcoming Water.

Our mission is to help you enjoy the benefits of a daily soak by making water care as simple as possible. How? Through innovation and technology that keeps your water fresh and clean, with less time and effort from you.



## CONTINUOUS FILTRATION

The EnergyPro® Circulation Pump, included on all Caldera spas, works efficiently to filter the entire volume of water multiple times each day.

## BEST PREP FOR CLEAN WATER

Make the most of your water care system with these chemical-free accessories. The Clean Screen® pre-filter attaches to your garden hose to help remove contaminants from the water. Use Vanishing Act® or On The Go® calcium removers to reduce buildup for softer and silkier-feeling water.

## SIMPLY BETTER WATER CARE

Whether you choose the FreshWater® IQ, our next generation water care system available on all Utopia® and Paradise® Series spas, or the FreshWater® Salt System in the Vacanza® Series, you'll spend less time maintaining and more time enjoying your spa. Both systems help keep your spa water clean, balanced, and natural feeling, so your spa is always ready for your next soak.



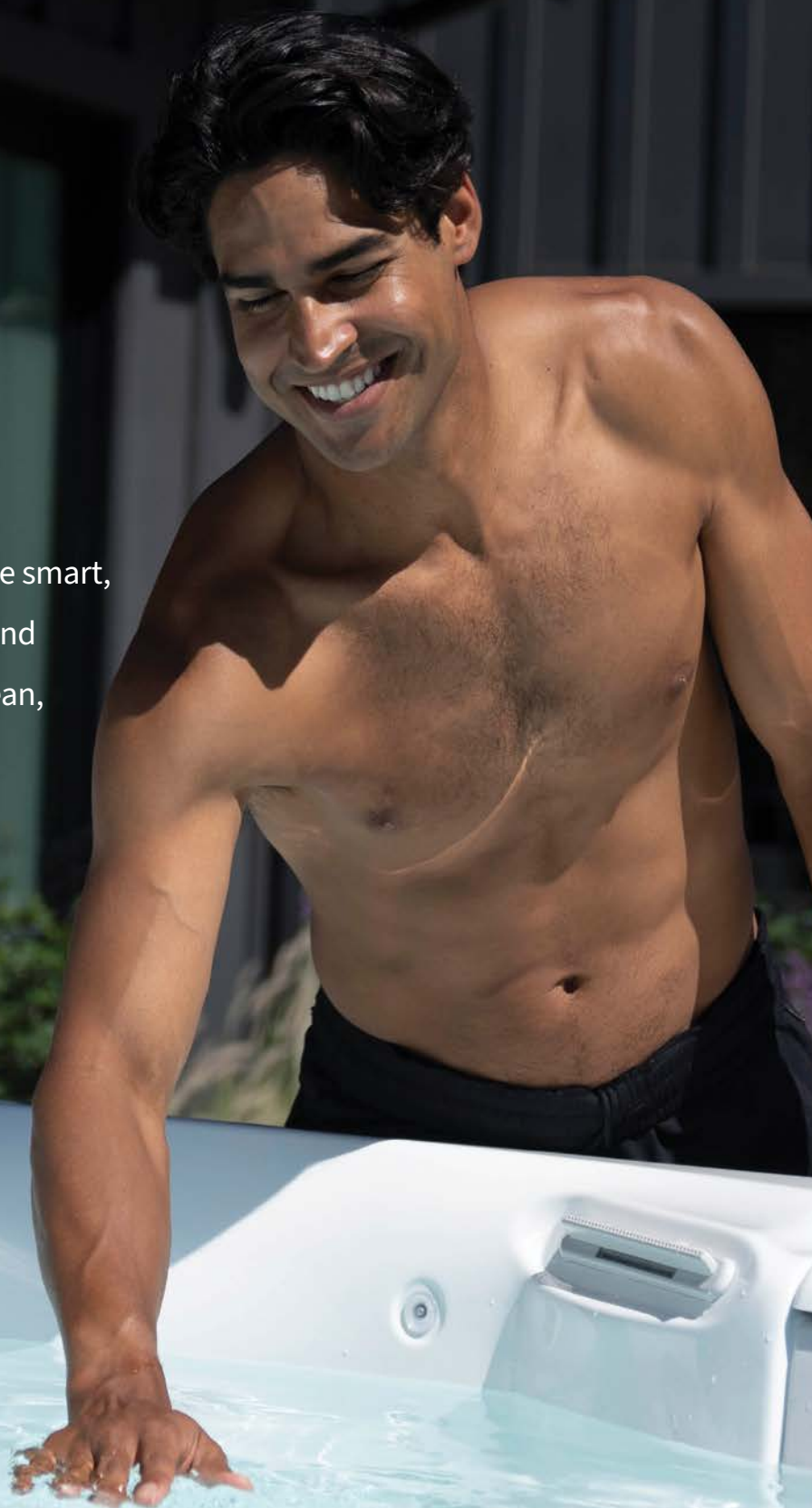


# LIQUID JUST GOT SMARTER.

EXPERIENCE THE MOST INTELLIGENT SALT WATER SYSTEM ON THE PLANET

Take the guesswork out of water care with FreshWater® IQ, the smart, in-line water care system that regularly tests your spa water and displays clear on-screen instructions to help you maintain clean, natural-feeling water.

**freshwater**® IQ



## Smarter.

### WE PUT THE IQ IN LIQUID

Our patented smart monitoring technology, found only in the FreshWater IQ System, regularly tests the pH, chlorine, and salt levels of your water, with more accuracy as compared to test strips. It then displays clear on-screen instructions to help you maintain clean, natural-feeling water.

## Cleaner.

### WATER THAT MAKES YOU GO AHHHHH

FreshWater IQ<sup>1</sup> uses the FreshWater Salt System to generate the perfect amount of chlorine from salt. With fewer chemicals required, water feels softer and gentler on eyes and skin and can stay clean and fresh up to a full year<sup>2</sup>, conserving water and saving time.

## Simpler.

### LESS MAINTAINING. MORE MASSAGING.

Take the guesswork out of water care. Easy-to-follow on-screen recommendations help you maintain clean, natural-feeling water.

## Better.

### THE MOST COMPREHENSIVE WATER CARE SYSTEM AVAILABLE

Fully integrated and easy to use, FreshWater IQ delivers better water with less work.

<sup>1</sup>Available on all Utopia® and Paradise® Series spas.

<sup>2</sup>Many factors affect the life of spa water, such as bather load and water chemistry. When these factors are accounted for and the spa is properly maintained, the FreshWater Salt System will keep water clean and clear for up to a full year.





# Hot Tub Circuit Therapy.®

Rotate through the circuit or just concentrate on the areas that need the most attention. In just 20 minutes, you'll emerge transformed.



1



UltraMassage®

2



Hip Jets

3



Atlas® Neck Massage

4



EcstaSeat®

5



Angled Calf Jets

6



LumbarSsage® Seat

7



Euphoria® Jets

8



Sole Soothers®



# Energy Efficiency.

When it comes to the spa experience, we don't believe in compromise. Each of our hot tubs meets the most stringent energy standards established by the California Energy Commission (CEC) for portable spas. From the insulation, heaters, and pumps to our custom-made covers, we'll keep your Caldera® spa hot and ready. And your energy bills low.

YOU'RE COVERED. FROM TOP TO BOTTOM.



FiberCor®

## FIBERCOR®

Our proprietary FiberCor gives you a breakthrough in insulation. The loose, wool-like fibers are applied in a two-pound density, which is four times greater than the half-pound density foam used in most spas. Completely filling the space between the spa shell and the cabinet, FiberCor fully insulates the spa, maximizing energy efficiency and keeping your operating costs low.



## ENERGYPRO® TECHNOLOGY

The EnergyPro circulation pump saves you money by operating at a very low wattage to filter water. Heater use is reduced, because 80 percent of the energy used to operate the pump is transferred back to the water as heat.

## CUSTOM HIGH-DENSITY COVERS

We custom-build your cover to the exact measurement of your spa to ensure a tight seal for optimum energy efficiency. The durable, WeatherPro® cover includes child safety locks and is UL listed in compliance with ASTM standards.



Spa Shown: Paradise® Series spa with Parchment cabinet and Storm cover.





# Discover Your Perfect Fit.

Transform tension into rejuvenation every time you step into your Caldera® spa. Each of our three unique series combines comfort, design, and performance so you can find the spa that's meant for you.



## UTOPIA® SERIES

Visually stunning. Hydrotherapy powerhouse. When paired with FreshWater® IQ, this high-performance series gives you an experience like no other.



## PARADISE® SERIES

A beautiful blend of practical and premium, designed to deliver your daily Caldera ritual in a remarkable way.



## VACANZA® SERIES

Caldera comfort. Caldera details. Caldera quality. All available at an exceptional value.







# Utopia® Series.

## AN IDEAL WORLD AWAITS

The pinnacle of hot tub design, the Utopia Series features an architecturally inspired cabinet with easy-to-use touchscreen controls and a top-of-the-line hydrotherapy experience. It's unlike anything else. And it's waiting for you.



### EXCEPTIONAL COMFORT

Take a seat and you'll immediately feel the Caldera difference, thanks to its unique, body-hugging contours and ergonomically designed configurations. Well-placed jets give you all the benefits of hydrotherapy to maximize relief of tired muscles.

Each Utopia model has up to eight Hot Tub Circuit Therapy® stations, with specialized jets including OrbiSage® rotating jets, Euphoria® jets, Atlas® Neck Massage system, and the UltraMasseuse® system available exclusively on the Cantabria®.

### EXTRAORDINARY DESIGN

Strength meets style with the EcoTech® Plus cabinet. Available in three contemporary colors, our premium cabinet includes a modern black header, wood grain accent, stainless-steel trim and integrated LED light bar that will complement any backyard aesthetic.

You'll also enjoy subtle style details to create a special ambiance, including the adjustable SpaGlo® lighting system that accents individual zones throughout the spa, such as the bar top, footwell, waterfall, and exterior front panel.

### INTUITIVE PERFORMANCE

Remarkable for their power and efficiency, these hot tubs are the very best of Caldera. They're also easy to care for, with the FreshWater® IQ System, which comes standard on all Utopia Series spas.

An ABS base pan beautifully frames the bottom of the spa and minimizes ground contact to improve energy efficiency.

Invisible, intuitive technologies, like the simple-to-use Advent® touchscreen control panel, let you make precise adjustments to your water temperature, jets, and lighting with ease.

Plus, with options like our wireless sound system, you can transform your experience. Your way.





# Utopia® Series.



CANTABRIA®



8  
SEATS

74  
JETS

9' X 7'7" X 38"  
SIZE

GENEVA®



6  
SEATS

55  
JETS

7'5" X 7'5" X 38"  
SIZE

NIAGARA®



7  
SEATS

52  
JETS

7'5" X 7'5" X 38"  
SIZE

TAHITIAN®



6  
SEATS

48  
JETS

7' X 7' X 36"  
SIZE

FLORENCE®



6  
SEATS

46  
JETS

7' X 7' X 36"  
SIZE

RAVELLO™



3  
SEATS

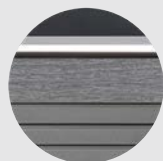
39  
JETS

7' X 5'6" X 33"  
SIZE

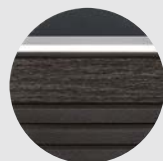
## CABINETS



PARCHMENT  
with Aspen



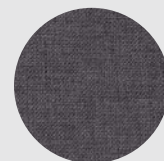
ASH  
with Medium Oak



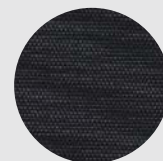
JAVA  
with Dark Oak



STORM  
Pairs with Parchment



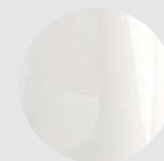
CHESTNUT  
Pairs with Ash



BLACK  
Pairs with Java

## COVERS

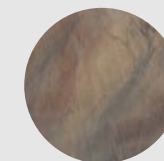
## SHELLS



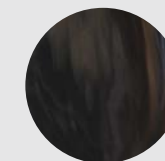
ARCTIC  
WHITE



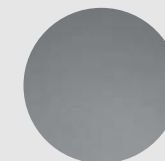
WHITE  
PEARL



TUSCAN  
SUN



MIDNIGHT  
CANYON



PLATINUM\*



# Paradise® Series.

STEP IN. TRANSFORM.

Transformation, wellness, and connection are always at your beck and call with our popular Paradise Series.



## CALDERA® COMFORT

Deep seats and a spacious interior help you enjoy the rejuvenating jet action on your back, thighs, calves, and feet.

## CALDERA DESIGN

Subtle wood grain and metallic accents combine for a modern twist on a classic spa design. Available in three contemporary colors with specially chosen metallic accents, you can coordinate your spa with your house, patio, or whatever you wish.

## CALDERA PERFORMANCE

The Paradise Series features performance innovations such as our exclusive energy-efficient FiberCor® insulation, DuraBond reinforced shell, and a durable, low-maintenance EcoTech® cabinet.

Enjoy fresh, clean and natural-feeling water with the FreshWater® IQ System, which is an available option on all Paradise Series spas.







# Paradise® Series.



MAKENA®



6  
SEATS

46  
JETS

7'5" X 7'5" X 36"  
SIZE

SALINA®



7  
SEATS

40  
JETS

7'5" X 7'5" X 36"  
SIZE

REUNION®



7  
SEATS

38  
JETS

7' X 7' X 36"  
SIZE

SEYCHELLES®



6  
SEATS

43  
JETS

7' X 7' X 36"  
SIZE

MARTINIQUE®



5  
SEATS

34  
JETS

7'5" X 6'4" X 34"  
SIZE

KAUAI®

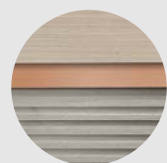


3  
SEATS

31  
JETS

7' X 5'5" X 29.5"  
SIZE

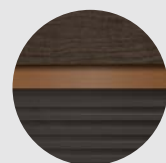
## CABINETS



PARCHMENT  
with Aspen and Light  
Copper Accent



ASH  
with Medium Oak and  
Brushed Nickel Accent



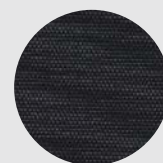
JAVA  
with Dark Oak and  
Dark Copper Accent



STORM  
Pairs with Parchment



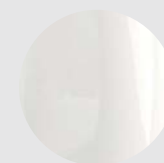
CHESTNUT  
Pairs with Ash



BLACK  
Pairs with Java

## COVERS

## SHELLS



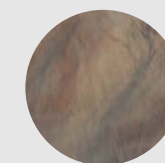
ARCTIC  
WHITE



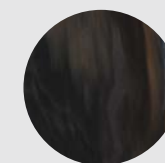
WHITE  
PEARL



DESERT



TUSCAN  
SUN



MIDNIGHT  
CANYON







# Vacanza® Series.

## RITUAL MEETS VALUE

All the wellness benefits of a Caldera® spa, available at an exceptional value. Refresh, renew, and emerge ready for what life has to offer.



## DESIGNED FOR EVERY DAY

Form meets function in the durable yet stylish EcoTech® cabinet available in three contemporary colors. The Caldera Points of Light System casts a reflective glow throughout the footwell, interior, and water edge of your spa.

## SIMPLE

Our revolutionary FreshWater® Salt System takes the work and worry right out of water care. This innovative, intuitive system provides better water with less hassle, so you can spend more time feeling renewed, restored and reconnected with your loved ones.

## INVITING

Strategically placed jets work together to target major muscle groups, while three contemporary cabinet colors seamlessly blend with any backyard style.







# Vacanza® Series.



PALATINO®



6  
SEATS

45  
JETS

7'5" X 7'5" X 38.5"  
SIZE

MARINO®



6  
SEATS

35  
JETS

7' X 7' X 36"  
SIZE

VANTO®



7  
SEATS

35  
JETS

7' X 7' X 36"  
SIZE

TARINO™



5  
SEATS

23  
JETS

6' 10" X 6' 10" X 33"  
SIZE

CELIO™



3  
SEATS

18  
JETS

7' X 5'5" X 29"  
SIZE

AVENTINE®



2  
SEATS

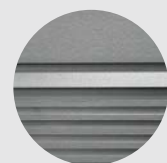
14  
JETS

5'4" X 5'4" X 29"  
SIZE

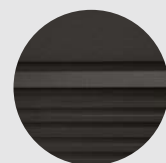
## CABINETS



PARCHMENT



ASH



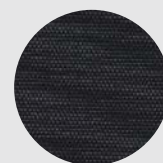
JAVA



STORM  
Pairs with Parchment



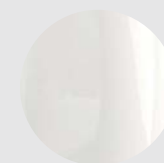
CHESTNUT  
Pairs with Ash



BLACK  
Pairs with Java

## COVERS

## SHELLS



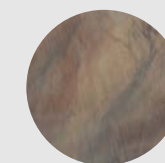
ARCTIC  
WHITE\*



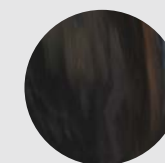
WHITE  
PEARL



DESERT\*



TUSCAN  
SUN



MIDNIGHT  
CANYON





















# Series Comparison.



BENEFITS		FEATURES	UTOPIA® SERIES
COMFORT		Hot Tub Circuit Therapy®	6-8 Stations
		Hip Jets	
		Wrist Jets	
		Atlas® Neck Jet	
		Euphoria Jets	
		Foot Well Massage	
		Contoured Pillows	
DESIGN		Handrail Assist	
		Advanced Cabinet Design	
		Backlit Waterfall	
		Interior Lighting	
		Exterior Lighting	
		Diagnostic Indicator Light	
		Touchscreen Control Panel	
		Advanced Digital Control Panel	
		Auxiliary Control Panel	
		Optional Integrated Speakers	
PERFORMANCE		Easy Water Care System	FreshWater® IQ System Included
		Premium Insulated Cover	
		FiberCor® Insulation	
		Sound Dampening Design	
		EnergyPro® Circulation System	
		EnergyPro Heater	
		Adjustable Water Flow	
		GFCI Protected Sub-Panel	
		Total Jets	39 – 74
		Reliaflo® Pumps	2 – 3

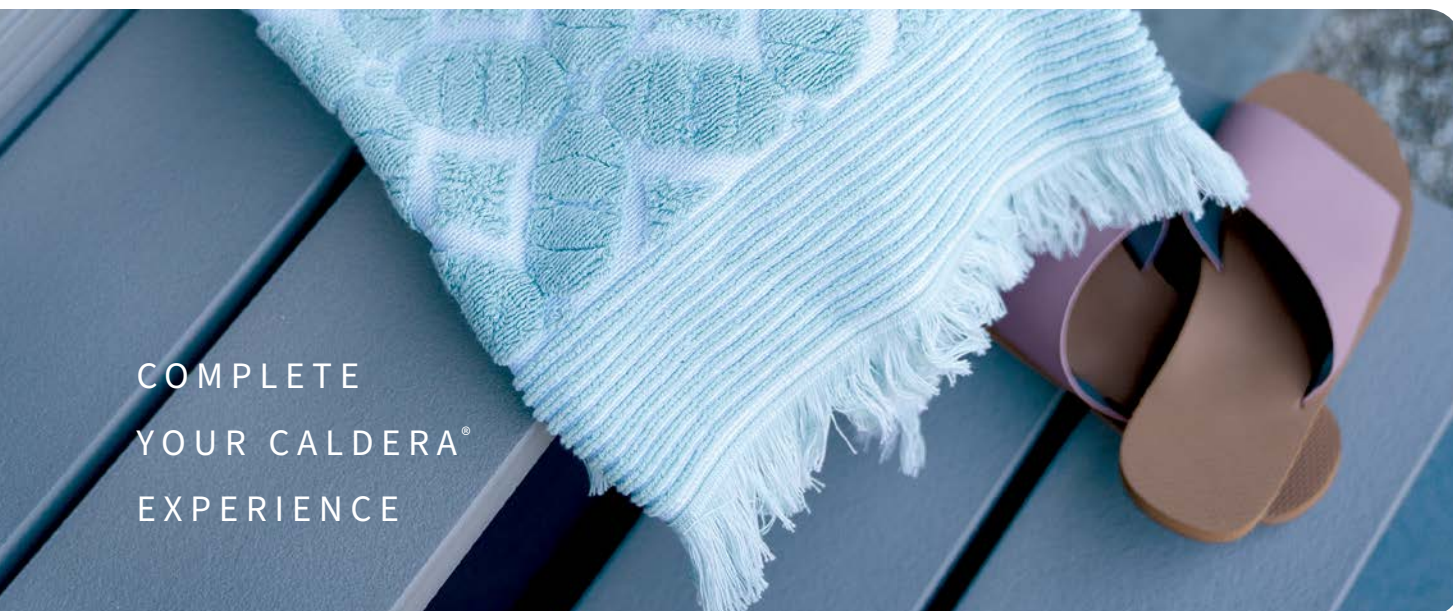
PARADISE® SERIES		VACANZA® SERIES
4-6 Stations		2-5 Stations
		
		
		
		
		
		
		
		
		
	FreshWater® IQ System Ready	FreshWater® Salt System Ready
		
		
		
		
		
		
		
	31 – 46	14 – 45
	1 – 2	1 – 2





# Hot Tub Essentials.

A variety of accessories are available to complement your daily ritual.



COMPLETE  
YOUR CALDERA®  
EXPERIENCE

## STEPS

We offer color-matched steps designed to complement each series.

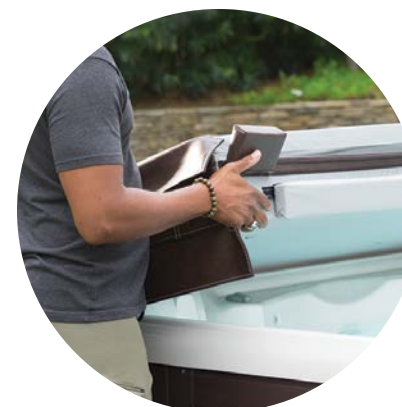
Available in Java, Ash and Parchment.



UTOPIA® SERIES



PARADISE® &  
VACANZA® SERIES



## COVER LIFTERS

A cover lifter is an essential spa accessory that protects your spa, the cover, and your investment. Designed to allow one person to effortlessly remove and replace the cover, a lifter makes it easy for you to be in your spa in seconds.



### PROLIFT®

The ProLift (not available on Utopia® Series spas) attaches to both cover and cabinet and has a built-in safety lock. Requires 14" minimum clearance.



### PROLIFT II

The ProLift II uses a single pneumatic gas shock for smooth operation. Requires 24" minimum clearance.



### PROLIFT III

Our best lifter, the ProLift III has two pneumatic gas shocks to provide smooth, quiet operation. Requires 24" minimum clearance.



### PROLIFT IV

For decks, gazebos, or other areas where clearance is limited, the ProLift IV enables you to position the cover vertically, just behind the spa. Requires just 7" minimum clearance.

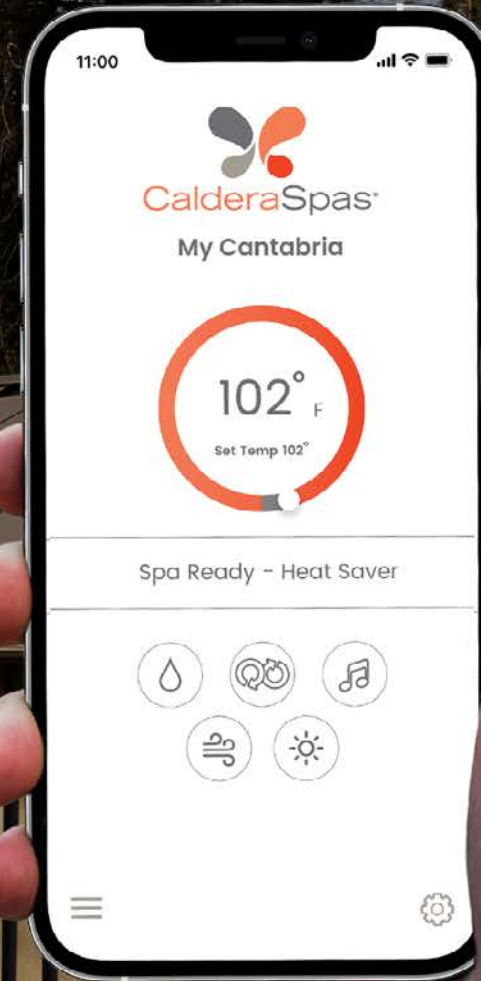
Each lifter requires 3" minimum side clearance.



# The Smart Way to Hot Tub.

CONTROL & MONITOR YOUR SPA  
FROM YOUR SMARTPHONE

The Caldera® Spas app lets you stay connected to your hot tub even when you're away. Easily adjust your spa's water temperature, monitor your FreshWater® Salt System, receive helpful reminders and more. Our app provides peace of mind, and the freedom to create meaningful experiences while being fully present in the moment.



## CONVENIENCE

Enjoy the flexibility to monitor and adjust your spa's functions and receive alerts, wherever you are.

## PEACE OF MIND

Stay calm and present for the people around you, knowing your hot tub can be controlled from anywhere with your smartphone.

## EASY OWNERSHIP

Receive helpful reminders that make spa ownership a breeze, like when to change your water filter, run a cleaning cycle or contact your dealer.



DOWNLOAD ON  
THE APP STORE  
OR GET IT ON  
GOOGLE PLAY

The Caldera Spas app is powered by the Connected Spa Kit, which is a dealer-installed option available on most Caldera spa models built after 2014. Spa must be within 150 ft (45 m) to Home Network Router to work. Ask your dealer for details. Not available on the Emerge™ cold plunge.



# Entertainment Systems.

Tune into your favorite show or play your favorite music from the comfort of your spa.

## MUSIC

We offer a range of integrated music options so you can find the entertainment system that works best for you, including a wireless sound system and an available subwoofer.

## 22" HD WIRELESS MONITOR

Enjoy live TV and streaming video in your spa with this optional high-definition monitor. The 1080p resolution and anti-glare screen give you a great picture. It includes a stand for easy installation, and it's built to withstand the weather. A vinyl cover is available for extra protection.



# Spa Side Accessories.



## HANDRAIL

Ideal for children, seniors, or anyone who wants to feel more secure getting in or out of their spa. For added safety, the handrail is illuminated with an LED light.

## UMBRELLA

Protect yourself from direct sunlight or rain with our large 9'8" diameter umbrella. Available in Crème or Navy.

## TOWEL TREE

Hang towels or robes. Made with weather-resistant, powder-coated aluminum.





# Awaken Your Wellness with the Emerge™ Cold Plunge.

THE PERFECT COMPLEMENT TO YOUR WELLNESS RITUAL



## Why Take the Plunge?

Unlock the transformative power of cold therapy with the Caldera Emerge™ — a revolutionary cold plunge solution designed to bring recovery and holistic well-being to your home. This proven practice, favored by athletes to build resilience, ease muscle soreness, accelerate recovery, and enhance physical performance, is now accessible to anyone seeking to elevate their wellness and enjoy their favorite activities, longer. Discover the harmony of mind and body with the Emerge.

## The Science of Cold Exposure.

### HEIGHTENED MOOD, FOCUS & MENTAL ACUITY

Cold exposure stimulates the release of norepinephrine and dopamine, which enhance mood, motivation, and mental acuity.

### REDUCED MUSCLE SORENESS

By lowering tissue temperature, cold exposure helps muscles recover faster and reduces soreness, making it ideal for athletes and active individuals.

### ENERGY BOOST

Cold water enhances your body's natural cooling processes so you feel more alert and recharged. Depending on your health and sensitivity, cold plunging can leave you refreshed, rejuvenated and ready for the day.

## Craftsmanship Meets Innovation.

The Caldera Emerge offers an unparalleled cold plunge experience. The perfect addition to your wellness retreat, it delivers the seamless performance, thoughtful design, and premium quality Caldera is famous for. Cold plunge enthusiasts seek experiences that inspire. With its ergonomic design, customizable temperature settings, and easy-fill system, the Emerge delivers on every level—helping you build resilience and recover faster.



### ENERGY-EFFICIENT DESIGN

Fully insulated with a heat barrier and custom-fit cover, the Emerge locks in cold while a high-performance heat pump helps keep energy costs low.

### INTUITIVE SETUP

Find your spot, fill the Emerge with water, and power it up. No special electrical work required — our Plug-n-Play technology makes setup seamless.

### BUILT TO LAST

Crafted with premium materials and backed by an industry-leading warranty, the Emerge will deliver recovery and renewal for years to come.





# Building Your Cold Plunge Routine.

Setting up a cold plunge routine tailored to your goals is simple:

## START SAFE & GRADUAL

Begin with water temperatures between 45-60°F for 1-2 minutes, gradually extending the duration and lowering the temperature as tolerance builds.

## FREQUENCY

Aim for 2-4 sessions weekly, targeting a total of 11 minutes per week. This approach aligns with research highlighting optimal benefits from consistent exposure.

## MINDSET

Embrace the initial discomfort as an opportunity to practice calmness and resilience. Controlled breathing techniques, such as slow rhythmic breaths, can help manage the cold and extend your time comfortably.

## Make it Yours.

Complement your space with the sleek, modern aesthetic of the EcoTech® all-weather cabinet, available in two versatile finishes. Complete the look with a matching insulated WeatherPro™ cover.

### CABINETS



ASH



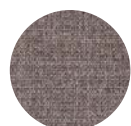
MOCHA

### COVERS



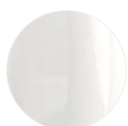
GRAY

Pairs with Ash



STORM

Pairs with Mocha



ARCTIC WHITE

### SHELL

### SPECIFICATIONS

**Size** 7'4" x 3'6" x 29"  
(224cm x 107cm x 74cm)

**Seats** 1

**Lowest Temp** 40°F / 4°C

**Dry Weight** 365 lbs. / 165 kg

**Water Capacity** 110 gallons / 425 liters

**Electrical** Plug-n-Play 115 V / 15 amp; GFCI protected power cord included

Before starting any cold plunge routine, consult your doctor to ensure it is safe for you, especially if you have underlying health conditions, circulatory issues, or sensitivities to cold exposure.

Actual colors and products may vary from print representation. See dealer for details.

For the complete list of specifications, please visit [Calderaspas.com/shop/cold-plunge/emerge](https://calderaspas.com/shop/cold-plunge/emerge)

# Hot & Cold Therapy in Perfect Harmony.

Experience the transformative power of contrast therapy by alternating between the soothing warm water hydrotherapy of a Caldera spa and the bracing chill of the Emerge cold plunge. This comprehensive wellness ritual delivers a complete therapeutic experience —providing a range of benefits from boosting your energy levels and reducing muscle soreness to improving sleep and elevating your mood. Discover a practice that renews both body and mind, helping you recover faster, feel more balanced, and embrace total well-being.







EMBRACE THE DAILY RITUAL



# Step into the World of Caldera Spa Owners.

Real Caldera owners share their stories of calm, comfort, and transformation.

*Since we have gotten our hot tub, we are in it every day. My husband and I can relax and unwind. We have seen shooting stars, learned new constellations, and even seen a sunrise.*

UTOPIA® SERIES GENEVA® OWNER, MAINE



*I absolutely love my spa and its FreshWater® Salt System. It's easy to maintain and leaves my skin feeling like silk. In addition to the pure enjoyment of using my hot tub, the jets have provided therapeutic relief for my muscle and nerve pain. I highly recommend Caldera Spas.*

PARADISE® SERIES MARTINIQUE® OWNER, TEXAS



*My wife and I purchased the Tarino® and we love it! It's a 5-seater with 2 loungers, and it has a waterfall and nice LED lights. We use it every day! Caldera is a great brand for hot tubs. Would recommend to anyone!*

VACANZA® SERIES TARINO® OWNER, OHIO



DOWNLOAD  
**VISION AR™**  
TO VIEW OUR SPAS  
IN YOUR SPACE



UTOPIA® SERIES

CANTABRIA®		GENEVA®		NIAGARA®	
Seat Capacity	8 adults	6 adults	7 adults		
Dimensions (Subject to change)	9' x 7'7" x 38" 274cm x 231cm x 97cm	7'5" x 7'5" x 38" 226cm x 226cm x 97cm	7'5" x 7'5" x 38" 226 cm x 226 cm x 97 cm		
Gallons	615 gallons / 2,325 liters	410 gallons / 1,550 liters	400 gallons / 1,525 liters		
Dry Weight	1,310 lbs. / 595 kg	1,000 lbs. / 455 kg	995 lbs. / 450 kg		
Filled Weight*	7,840 lbs. / 3,560 kg	5,470 lbs. / 2,485 kg	5,555 lbs. / 2,535 kg		
Shell Colors	Arctic White, White Pearl, Platinum, Tuscan Sun, or Midnight Canyon	Arctic White, White Pearl, Platinum, Tuscan Sun, or Midnight Canyon	Arctic White, White Pearl, Platinum, Tuscan Sun, or Midnight Canyon		
Cabinet & Step Colors	Java, Ash, or Parchment	Java, Ash, or Parchment	Java, Ash, or Parchment		
Cabinet Type	EcoTech® Plus Cabinet	EcoTech® Plus Cabinet	EcoTech® Plus Cabinet		
Step Type	Utopia® Series	Utopia® Series	Utopia® Series		
Cover Colors	Storm, Chestnut, Black	Storm, Chestnut, Black	Storm, Chestnut, Black		
Cover Lifters	ProLift® IV, ProLift® III (ProLift® III Included)	ProLift® IV, ProLift® III, ProLift® II	ProLift® IV, ProLift® III, ProLift® II		
Bottom Seal	Base Pan	Base Pan	Base Pan		
Lighting	SpaGlo® Multi-Zone Lighting including 14 Interior Points-of-Light and Exterior LED Light Bar	SpaGlo® Multi-Zone Lighting including 12 Interior Points-of-Light and Exterior LED Light Bar	SpaGlo® Multi-Zone Lighting including 12 Interior Points-of-Light and Exterior LED Light Bar		
Logo Light/Branding	Diagnostic Logo Light	Diagnostic Logo Light	Diagnostic Logo Light		
Pumps	3 ReliaFlo® Pumps 2 Dual-Speed 2.5HP (5.2 BHP**) 1 Single-Speed 2.5HP (5.2 BHP**)	2 ReliaFlo® Pumps 1 Dual-Speed 2.5HP (5.2 BHP**) 1 Single-Speed 2.5HP (5.2 BHP**)	2 ReliaFlo® Pumps 1 Dual-Speed 2.5HP (5.2 BHP**) 1 Single-Speed 2.5HP (5.2 BHP**)		
Hot Tub Circuit Therapy® Stations	8 Stations (UltraMassage® Lounge, Altas® Neck Massage, EcstaSeat®, Angled Calf Jets, LumbarSsage® Seat, Hip Jets, Sole Soothers®, Euphoria® Jet)	8 Stations (UltraMassage® Lounge, Altas® Neck Massage, EcstaSeat®, Angled Calf Jets, LumbarSsage® Seat, Hip Jets, Sole Soothers®, Euphoria® Jets)	7 Stations (UltraMassage® Seat, Altas® Neck Massage, EcstaSeat®, Angled Calf Jets, LumbarSsage® Seat, Hip Jets, Euphoria® Jets)		
Jets	74 Jets (UltraMasseuse® System, 56 Euro, 7 VersaSsage®, 4 AdaptaSsage®, 4 Euro-Pulse®, 2 OrbiSsage®, 1 Euphoria®)	55 Jets (40 Euro, 4 VersaSsage®, 1 AdaptaFlo®, 4 AdaptaSsage®, 2 Euro-Pulse®, 2 OrbiSsage®, 2 Euphoria®)	52 Jets (38 Euro, 4 VersaSsage®, 2 AdaptaFlo®, 4 Euro-Pulse®, 2 OrbiSsage®, 2 Euphoria®)		
Controls	Advent® LCD Touchscreen Control with Auxiliary Panel, and UltraMasseuse® Panel	Advent® LCD Touchscreen Control with Auxiliary Panel	Advent® LCD Touchscreen Control with Auxiliary Panel		
Circulation Pump	EnergyPro® Circulation Pump	EnergyPro® Circulation Pump	EnergyPro® Circulation Pump		
Heater	EnergyPro® Heater 4,000 Watts 230v	EnergyPro® Heater 4,000 Watts 230v	EnergyPro® Heater 4,000 Watts 230v		
Filter Size	100 sq. ft.	100 sq. ft.	100 sq. ft.		
Water Care System	FreshWater® IQ System Included	FreshWater® IQ System Included	FreshWater® IQ System Included		
Electrical Requirements	230V/50 amp	230V/50 amp	230V/50 amp		
GFCI Protected Sub-Panel	Included	Included	Included		
Music System (Optional)	8 - 1" sq. speakers; Wireless Audio System; Subwoofer	N/A	N/A		
Speakers (Optional)	N/A	6 - 1" square	8 - 1" square		
Entertainment (Optional)	22" HD Wireless Monitor	Wireless Audio System; Subwoofer; 22" HD Wireless Monitor (each sold separately)	Wireless Audio System; Subwoofer; 22" HD Wireless Monitor (each sold separately)		
Water Features	2 - Acquarella® Waterfalls w/LED lighting	1 - Acquarella® Waterfall w/LED lighting	1 - Acquarella® Waterfall w/LED lighting		

TAHITIAN®		FLORENCE®		RAVELLO™	
Seat Capacity	6 adults	6 adults	3 adults		
Dimensions (Subject to change)	7' x 7' x 36" 213 cm x 213 cm x 91 cm	7' x 7' x 36" 213 cm x 213 cm x 91 cm	7' x 5'6" x 33" 213 cm x 168 cm x 84 cm		
Gallons	375 gallons / 1,425 liters	360 gallons / 1,362 liters	265 gallons / 1,025 liters		
Dry Weight	900 lbs. / 410 kg	872 lbs. / 395 kg	720 lbs. / 325 kg		
Filled Weight*	5,080 lbs. / 2,315 kg	4,925 lbs. / 2,235 kg	3,460 lbs. / 1,590 kg		
Shell Colors	Arctic White, White Pearl, Platinum, Tuscan Sun, or Midnight Canyon	Arctic White, White Pearl, Platinum, Tuscan Sun, or Midnight Canyon	Arctic White, White Pearl, Platinum, Tuscan Sun, or Midnight Canyon		
Cabinet & Step Colors	Java, Ash, or Parchment	Java, Ash, or Parchment	Java, Ash, or Parchment		
Cabinet Type	EcoTech® Plus Cabinet	EcoTech® Plus Cabinet	EcoTech® Plus Cabinet		
Step Type	Utopia® Series	Utopia® Series	Utopia® Series		
Cover Colors	Storm, Chestnut, Black	Storm, Chestnut, Black	Storm, Chestnut, Black		
Cover Lifters	ProLift® IV, ProLift® III, ProLift® II	ProLift® IV, ProLift® III, ProLift® II	ProLift® III, ProLift® II		
Bottom Seal	Base Pan	Base Pan	Base Pan		
Lighting	SpaGlo® Multi-Zone Lighting including 10 Interior Points-of-Light and Exterior LED Light Bar	SpaGlo® Multi-Zone Lighting including 10 Interior Points-of-Light and Exterior LED Light Bar	SpaGlo® Multi-Zone Lighting including 7 Interior Points-of-Light and Exterior LED Light Bar		
Logo Light/Branding	Diagnostic Logo Light	Diagnostic Logo Light	Diagnostic Logo Light		
Pumps	2 ReliaFlo® Pumps 1 Dual-Speed 2.5HP (5.2 BHP**) 1 Single-Speed 2.5HP (5.2 BHP**)	2 ReliaFlo® Pumps 1 Dual-Speed 2.5HP (5.2 BHP**) 1 Single-Speed 2.5HP (5.2 BHP**)	2 ReliaFlo® Pumps 1 Dual-Speed 2.5HP (5.2 BHP**) 1 Single-Speed 2.5HP (5.2 BHP**)		
Hot Tub Circuit Therapy® Stations	7 Stations (UltraMassage® Lounge, Altas® Neck Massage, EcstaSeat®, Angled Calf Jets, LumbarSsage® Seat, Sole Soothers®, Euphoria® Jets)	7 Stations (UltraMassage® Seat, Altas® Neck Massage, EcstaSeat®, Angled Calf Jets, LumbarSsage® Seat, Hip Jets, Euphoria® Jets)	4 Stations (UltraMassage® Lounge, EcstaSeat®, LumbarSsage® Seat, Euphoria® Jet)		
Jets	48 Jets (36 Euro, 4 VersaSsage®, 2 AdaptaSsage®, 2 AdaptaFlo®, 2 OrbiSsage®, 2 Euphoria®)	46 Jets (32 Euro, 4 VersaSsage®, 4 AdaptaSsage®, 2 Euro-Pulse®, 2 OrbiSsage®, 2 Euphoria®)	39 Jets (30 Euro, 4 VersaSsage®, 2 Euro-Pulse®, 2 OrbiSsage®, 1 Euphoria®)		
Controls	Advent® LCD Touchscreen Control with Auxiliary Panel	Advent® LCD Touchscreen Control with Auxiliary Panel	Advent® LCD Touchscreen Control		
Circulation Pump	EnergyPro® Circulation Pump	EnergyPro® Circulation Pump	EnergyPro® Circulation Pump		
Heater	EnergyPro® Heater 4,000 Watts 230v	EnergyPro® Heater 4,000 Watts 230v	EnergyPro® Heater 4,000 Watts 230v		
Filter Size	100 sq. ft.	100 sq. ft.	75 sq. ft.		
Water Care System	FreshWater® IQ System Included	FreshWater® IQ System Included	FreshWater® IQ System Included		
Electrical Requirements	230V/50 amp	230V/50 amp	230V/50 amp		
GFCI Protected Sub-Panel	Included	Included	Included		
Music System (Optional)	N/A	N/A	N/A		
Speakers (Optional)	6 - 1" square	6 - 1" square	4 - 1.5" square		
Entertainment (Optional)	Wireless Audio System; Subwoofer; 22" HD Wireless Monitor (each sold separately)	Wireless Audio System; Subwoofer; 22" HD Wireless Monitor (each sold separately)	Wireless Audio System; Subwoofer; 22" HD Wireless Monitor (each sold separately)		
Water Features	1 - Acquarella® Waterfall w/LED lighting	1 - Acquarella® Waterfall w/LED lighting	N/A		

\*Filled weight includes the weight of the occupants assuming an average weight of 175 lbs.    \*\*Brake Horsepower (BHP) is the horsepower a pump motor achieves for a brief period upon start-up.



PARADISE® SERIES

	MAKENA®	SALINA®	REUNION™
Seat Capacity	6 adults	7 adults	7 adults
Dimensions (Subject to change)	7'5" x 7'5" x 36" 226cm x 226cm x 91cm	7'5" x 7'5" x 36" 226cm x 226cm x 91cm	7' x 7' x 36" 213cm x 213cm x 91cm
Gallons	395 gallons / 1,500 liters	420 gallons / 1,600 liters	350 gallons / 1,325 liters
Dry Weight	1,020 lbs. / 465 kg	1,005 lbs. / 455 kg	940 lbs. / 425 kg
Filled Weight*	5,365 lbs. / 2,445 kg	5,735 lbs. / 2,615 kg	5,085 lbs. / 2,310 kg
Shell Colors	Arctic White, White Pearl, Tuscan Sun, Midnight Canyon, or Desert	Arctic White, White Pearl, Tuscan Sun, Midnight Canyon, or Desert	Arctic White, White Pearl, Tuscan Sun, Midnight Canyon, or Desert
Cabinet & Step Colors	Java, Ash, or Parchment	Java, Ash, or Parchment	Java, Ash, or Parchment
Cabinet Type	EcoTech® Cabinet	EcoTech® Cabinet	EcoTech® Cabinet
Step Type	Paradise® & Vacanza® Series	Paradise® & Vacanza® Series	Paradise® & Vacanza® Series
Cover Colors	Storm, Chestnut, Black	Storm, Chestnut, Black	Storm, Chestnut, Black
Cover Lifters	ProLift® IV, ProLift® III, ProLift® II, ProLift®	ProLift® IV, ProLift® III, ProLift® II, ProLift®	ProLift® IV, ProLift® III, ProLift® II, ProLift®
Bottom Seal	Poly Sheet	Poly Sheet	Poly Sheet
Lighting	SpaGlo® 12 Interior Points-of-Light	SpaGlo® 12 Interior Points-of-Light	SpaGlo® 12 Interior Points-of-Light
Logo Light/Branding	Branding Decal on cabinet	Branding Decal on cabinet	Branding Decal on cabinet
Pumps	2 ReliaFlo® Pumps 1 Dual-Speed 2.5HP (5.2 BHP**) 1 Single-Speed 2.5HP (5.2 BHP**)	2 ReliaFlo® Pumps 1 Dual-Speed 2.5HP (5.2 BHP**) 1 Single-Speed 2.5HP (5.2 BHP**)	2 ReliaFlo® Pumps 1 Dual-Speed 2.5HP (5.2 BHP**) 1 Single-Speed 2.5 HP (5.2 BHP**)
Hot Tub Circuit Therapy® Stations	6 Stations (UltraMassage® Lounge, EcstaSeat®, Angled Calf Jets, LumbarSsage® Seat, Sole Soothers®, Euphoria® Jet)	4 Stations (EcstaSeat®, Angled Calf Jets, LumbarSsage® Seat, Euphoria® Jet)	5 Stations (UltraMassage® Seat, EcstaSeat®, Angled Calf Jets, LumbarSsage® Seat, Euphoria® Jet)
Jets	46 Jets (37 Euro, 6 VersaSsage®, 2 AdaptaFlo®, 1 Euphoria®)	40 Jets (29 Euro, 6 VersaSsage®, 4 AdaptaFlo®, 1 Euphoria®)	38 Jets (28 Euro, 1 Euphoria® jet, 6 VersaSsage® jets, 2 AdaptaSsage® jets, 1 AdaptaFlo® jet)
Controls	Advent® LCD Main Control Panel	Advent® LCD Main Control Panel	Advent® LCD Main Control Panel
Circulation Pump	EnergyPro® Circulation Pump	EnergyPro® Circulation Pump	EnergyPro® Circulation Pump
Heater	EnergyPro® Heater 4,000 Watts 230v	EnergyPro® Heater 4,000 Watts 230v	EnergyPro® Heater 4,000 Watts 230v
Filter Size	75 sq. ft.	75 sq. ft.	75 sq. ft.
Water Care System	FreshWater® IQ System Ready	FreshWater® IQ System Ready	FreshWater® IQ System Ready
Electrical Requirements	230V/50 amp	230V/50 amp	230V/50 amp
GFCI Protected Sub-Panel	Included	Included	Included
Speakers (Optional)	4 - 3.5" round	4 - 3.5" round	4 - 1.5" square
Entertainment (Optional)	Wireless Audio System, 22" HD Wireless Monitor	Wireless Audio System, 22" HD Wireless Monitor	Wireless Audio System, 22" HD Wireless Monitor
Water Features	1 - Acquarella® Waterfall w/LED lighting	1 - Acquarella® Waterfall w/LED lighting	1 - Acquarella® Waterfall w/LED lighting

	SEYCHELLES™	MARTINIQUE®	KAUAI®
Seat Capacity	6 adults	5 adults	3 adults
Dimensions (Subject to change)	7' x 7' x 36" 213cm x 213cm x 91cm	7'5" x 6'4" x 34" 226cm x 193cm x 87cm	7' x 5'5" x 29.5" 213cm x 165cm x 75cm
Gallons	330 gallons / 1,250 liters	285 gallons / 1,080 liters	230 gallons / 875 liters
Dry Weight	945 lbs. / 430 kg	930 lbs. / 420 kg	740 lbs. / 335 kg
Filled Weight*	4,745 lbs. / 2,160 kg	4,180 lbs. / 1,895 kg	3,185 lbs. / 1,450 kg
Shell Colors	Arctic White, White Pearl, Tuscan Sun, Midnight Canyon, or Desert	Arctic White, White Pearl, Tuscan Sun, Midnight Canyon, or Desert	Arctic White, White Pearl, Tuscan Sun, Midnight Canyon, or Desert
Cabinet & Step Colors	Java, Ash, or Parchment	Java, Ash, or Parchment	Java, Ash, or Parchment
Cabinet Type	EcoTech® Cabinet	EcoTech® Cabinet	EcoTech® Cabinet
Step Type	Paradise® & Vacanza® Series	Paradise® & Vacanza® Series	Paradise® & Vacanza® Series
Cover Colors	Storm, Chestnut, Black	Storm, Chestnut, Black	Storm, Chestnut, Black
Cover Lifters	ProLift® IV, ProLift® III, ProLift® II, ProLift®	ProLift® IV, ProLift® III, ProLift® II, ProLift®	ProLift® IV, ProLift® III, ProLift® II, ProLift®
Bottom Seal	Poly Sheet	Poly Sheet	Poly Sheet
Lighting	SpaGlo® 12 Interior Points-of-Light	SpaGlo® 10 Interior Points-of-Light	SpaGlo® 7 Interior Points-of-Light
Logo Light/Branding	Branding Decal on cabinet	Branding Decal on cabinet	Branding Decal on cabinet
Pumps	2 ReliaFlo® Pumps 1 Dual-Speed 2.5HP (5.2 BHP**) 1 Single-Speed 2.5 HP (5.2 BHP**)	2 ReliaFlo® Pumps 1 Dual-Speed 1.5HP (3.2 BHP**) 1 Single-Speed 2.0 HP (4.0 BHP**)	1 ReliaFlo® Pump 1 Single-Speed 2.0HP (4.0 BHP**)
Hot Tub Circuit Therapy® Stations	6 Stations (UltraMassage® Lounge, EcstaSeat®, Angled Calf Jets, LumbarSsage® Seat, Sole Soothers®, Euphoria® Jet)	5 Stations (UltraMassage® Lounge, EcstaSeat®, Angled Calf Jets, LumbarSsage® Seat, Sole Soothers®)	5 Stations (UltraMassage® Lounge, EcstaSeat®, Angled Calf Jets, LumbarSsage Seat®, Sole Soothers®)
Jets	43 Jets (34 Euro, 1 Euphoria® jet, 5 VersaSsage® jets, 2 AdaptaSsage® jets, 1 AdaptaFlo® jet)	34 Jets (24 Euro, 7 VersaSsage®, 2 AdaptaSsage®, 1 AdaptaFlo®)	31 Jets (24 Euro, 5 VersaSsage®, 2 Euro-Pulse®)
Controls	Advent® LCD Main Control Panel	Advent® LCD Main Control Panel	Advent® LCD Main Control Panel
Circulation Pump	EnergyPro® Circulation Pump	EnergyPro® Circulation Pump	EnergyPro® Circulation Pump
Heater	EnergyPro® Heater 4,000 Watts 230v	EnergyPro® Heater 4,000 Watts 230v	EnergyPro® Heater 4,000 Watts 230v
Filter Size	75 sq. ft.	50 sq. ft.	50 sq. ft.
Water Care System	FreshWater® IQ System Ready	FreshWater® IQ System Ready	FreshWater® IQ System Ready
Electrical Requirements	230V/50 amp	230V/50 amp	230V/50 amp
GFCI Protected Sub-Panel	Included	Included	Included
Speakers (Optional)	4 - 1.5" square	4 - 3.5" round	3 - 3.5" round
Entertainment (Optional)	Wireless Audio System, 22" HD Wireless Monitor	Wireless Audio System, 22" HD Wireless Monitor	Wireless Audio System, 22" HD Wireless Monitor
Water Features	1 - Acquarella® Waterfall w/LED lighting	1 - Acquarella® Waterfall w/LED lighting	N/A

\*Filled weight includes the weight of the occupants assuming an average weight of 175 lbs.    \*\*Brake Horsepower (BHP) is the horsepower a pump motor achieves for a brief period upon start-up.



VACANZA® SERIES

PALATINO °		MARINO °	VANTO °
Seat Capacity	6 adults	6 adults	7 adults
Dimensions (Subject to change)	7'5" x 7'5" x 38.5" 226cm x 226cm x 98cm	7' x 7' x 36" 213cm x 213cm x 91cm	7' x 7' x 36" 213cm x 213cm x 91cm
Gallons	400 gallons / 1,525 liters	360 gallons / 1,375 liters	375 gallons / 1,425 liters
Dry Weight	910 lbs. / 415 kg	835 lbs. / 380 kg	845 lbs. / 385 kg
Filled Weight*	5,295 lbs. / 2,420 kg	4,885 lbs. / 2,235 kg	5,200 lbs. / 2,370 kg
Shell Colors	Arctic White, White Pearl, Tuscan Sun, Midnight Canyon, or Desert	Arctic White, White Pearl, Tuscan Sun, Midnight Canyon, or Desert	Arctic White, White Pearl, Tuscan Sun, Midnight Canyon, or Desert
Cabinet & Step Colors	Java, Ash, or Parchment	Java, Ash, or Parchment	Java, Ash, or Parchment
Cabinet Type	EcoTech® Cabinet	EcoTech® Cabinet	EcoTech® Cabinet
Step Type	Paradise® & Vacanza® Series	Paradise® & Vacanza® Series	Paradise® & Vacanza® Series
Cover Colors	Storm, Chestnut, Black	Storm, Chestnut, Black	Storm, Chestnut, Black
Cover Lifters	ProLift® IV, ProLift® III, ProLift® II, ProLift®	ProLift® IV, ProLift® III, ProLift® II, ProLift®	ProLift® IV, ProLift® III, ProLift® II, ProLift®
Bottom Seal	Visquene Sheet	Visquene Sheet	Visquene Sheet
Lighting	Mystique® 10 Interior Points-of-light	Mystique® 10 Interior Points-of-light	Mystique® 10 Interior Points-of-light
Logo Light/Branding	Branding Decal on cabinet	Branding Decal on cabinet	Branding Decal on cabinet
Pumps	2 ReliaFlo® Pumps 1 Dual-Speed 2.5HP (5.2 BHP**) 1 Single-Speed 2.5HP (5.2 BHP**)	2 ReliaFlo® Pumps 1 Dual-Speed 1.5HP (3.2 BHP**) 1 Single-Speed 1.5HP (3.2 BHP**)	2 ReliaFlo® Pumps 1 Dual-Speed 1.5HP (3.2 BHP**) 1 Single-Speed 1.5HP (3.2 BHP**)
Hot Tub Circuit Therapy® Stations	5 Stations (UltraMassage® Lounge, EcstaSeat®, Angled Calf Jets, LumbarSsage® Seat, Sole Soothers®)	4 Stations (UltraMassage® Lounge, EcstaSeat®, Angled Calf Jets, LumbarSsage® Seat)	3 Stations (UltraMassage® Seat, EcstaSeat®, LumbarSsage® Seat)
Jets	45 Jets (35 Euro, 6 AdaptaFlo®, 4 AdaptaSsage®)	35 Jets (27 Euro, 5 AdaptaFlo®, 3 AdaptaSsage®)	35 Jets (27 Euro, 5 AdaptaFlo®, 3 AdaptaSsage®)
Controls	LCD Main Control Panel	LCD Main Control Panel	LCD Main Control Panel
Circulation Pump	EnergyPro® Circulation Pump	EnergyPro® Circulation Pump	EnergyPro® Circulation Pump
Heater	Hi-Flow Heater (4,000 Watts)	Hi-Flow Heater (4,000 Watts)	Hi-Flow Heater (4,000 Watts)
Filter Size	65 sq. ft.	65 sq. ft.	65 sq. ft.
Water Care System	FreshWater® Salt System Ready	FreshWater® Salt System Ready	FreshWater® Salt System Ready
Electrical Requirements	230V/50 amp	230V/50 amp	230V/50 amp
GFCI Protected Sub-Panel	Included	Included	Included
Speakers (Optional)	4 - 1" square	4 - 1" square	4 - 1" square
Entertainment (Optional)	Wireless Audio System, 22" HD Wireless Monitor	Wireless Audio System, 22" HD Wireless Monitor	Wireless Audio System, 22" HD Wireless Monitor
Water Features	1 - Acquarella® Waterfall	1 - Acquarella® Waterfall	1 - Acquarella® Waterfall

TARINO™		CELIO™	AVENTINE °
Seat Capacity	5 adults	3 adults	2 adults
Dimensions (Subject to change)	6'10" x 6'10" x 33" 208cm x 208cm x 84cm	7' x 5'5" x 29" 213cm x 165cm x 74cm	5'4" x 5'4" x 29" 162cm x 162cm x 74cm
Gallons	310 gallons / 1,175 liters	215 gallons / 825 liters	150 gallons / 575 liters
Dry Weight	730 lbs. / 330 kg	635 lbs. / 290 kg	440 lbs. / 200 kg
Filled Weight*	4,190 lbs. / 1,905 kg	2,955 lbs. / 1,355 kg	2060 lbs. / 935 kg
Shell Colors	Arctic White, White Pearl, Tuscan Sun, Midnight Canyon, or Desert	Arctic White, White Pearl, Tuscan Sun, Midnight Canyon, or Desert	Arctic White or Desert
Cabinet & Step Colors	Java, Ash, or Parchment	Java, Ash, or Parchment	Java, Ash, or Parchment
Cabinet Type	EcoTech® Cabinet	EcoTech® Cabinet	EcoTech® Cabinet
Step Type	Paradise® & Vacanza® Series	Paradise® & Vacanza® Series	Paradise® & Vacanza® Series
Cover Colors	Storm, Chestnut, Black	Storm, Chestnut, Black	Storm, Chestnut, Black
Cover Lifters	ProLift® IV, ProLift® III, ProLift® II, ProLift®	N/A	N/A
Bottom Seal	Visquene Sheet	Visquene Sheet	Visquene Sheet
Lighting	Mystique® 10 Interior Points-of-light	Mystique® 6 Interior Points-of-light	Blue LED Main Light (Optional Mystique System)
Logo Light/Branding	Branding Decal on cabinet	Branding Decal on cabinet	Branding Decal on cabinet
Pumps	1 ReliaFlo® Pump 1 Dual-Speed 1.5HP (3.2 BHP**)	1 ReliaFlo® Pump 1 Dual-Speed 1.5HP (3.2 BHP**)	1 ReliaFlo® Pump 1 Dual-Speed 1.5HP (3.2 BHP**)
Hot Tub Circuit Therapy® Stations	3 Stations (EcstaSeat®, Angled Calf Jets, LumbarSsage® Seat)	2 Stations (UltraMassage® Lounge, EcstaSeat®)	2 Stations (UltraMassage® Seat, LumbarSsage® Seat)
Jets	23 Jets (17 Euro, 4 AdaptaFlo®, 2 AdaptaSsage®)	18 Jets (14 Euro, 3 AdaptaFlo®, 1 AdaptaSsage®)	14 Jets (8 Euro, 6 AdaptaFlo®)
Controls	LCD Main Control Panel	LCD Main Control Panel	LCD Main Control Panel
Circulation Pump	EnergyPro® Circulation Pump	EnergyPro® Circulation Pump	EnergyPro® Circulation Pump
Heater	Hi-Flow Heater (1,000/4,000 Watts)	Hi-Flow Heater (1,000/4,000 Watts)	Hi-Flow Heater (1,000/4,000 Watts)
Filter Size	30 sq. ft.	30 sq. ft.	35 sq. ft.
Water Care System	FreshWater® Salt System Ready	FreshWater® Salt System Ready	FreshWater® Salt System Ready
Electrical Requirements	115V/20 amp, or 230V/50 amp	115V/20 amp, or 230v/50 amp	115V/20 amp, or 230v/50 amp
GFCI Protected Sub-Panel	GFCI Protected Power Cord	GFCI Protected Power Cord	GFCI Protected Power Cord
Speakers (Optional)	4 - 1" square	N/A	N/A
Entertainment (Optional)	Wireless Audio System, 22" HD Wireless Monitor	N/A	N/A
Water Features	1 - Acquarella® Waterfall	N/A	N/A





# Our Promise To You.



## A LEGACY OF TRUST

Caldera® Spas was founded more than 40 years ago and is one of the most trusted spa brands in the world. Caldera is manufactured by Watkins Wellness — the global leader that has built more than 1.8 million hot tubs.

## OUR WORD

From precision craftsmanship to rigorous quality control and testing, each Caldera spa is scrutinized for form, function, fit, and finish before it is ready for you. We are committed to the highest level of quality and back each spa with our exceptional ComfortGuard® limited warranty — one of the best in the industry.

## RECOGNITION

Caldera Spas are recognized for performance, quality, and customer satisfaction and have been selected as a TradeCertified™ manufacturer for 18 consecutive years. But don't take our word for it. We invite you to visit our website to check out our ratings and reviews and see for yourself what makes Caldera owners satisfied owners.

## ALWAYS THERE

Backed by the full expertise and resources of Caldera Spas, our professional retailers are committed to ensuring your long-term satisfaction. From purchase to installation to service and more, count on your professional retailer to make your Caldera Spas experience easy and enjoyable.

## A GLOBAL LEADER

Watkins Wellness is owned by Masco Corporation. A Fortune 500 company, Masco is a global leader whose family of trusted home products includes brands like Behr® Paint and Delta® Faucets.



**WatkinsWellness®**  
*Feel good. Live well.*







# A Warranty You Can Count On.

Caldera® Spas delivers the peace of mind that only comes when you know that your investment is protected by the most complete warranty in the industry.

How do we do it? Simple. If you make the best products with the most dependable, high-performance components, offering the best warranty is just the logical next step. From precision craftsmanship to rigorous quality control and testing, each Caldera spa is scrutinized for form, function, fit and finish.

## UTOPIA® AND PARADISE® SERIES

- 10-Year No-Leak Shell Warranty
- 7-Year Shell Surface Warranty
- 5-Year EcoTech® Plus Cabinet Warranty
- 3-Year EcoTech® Cabinet Warranty
- 5-Year No-Leak Plumbing Warranty
- 5-Year Component Warranty
- 5-Year EnergyPro® Heater Warranty

## VACANZA® SERIES

- 5-Year No-Leak Shell Warranty
- 2-Year Shell Surface Warranty
- 2-Year EcoTech® Cabinet Warranty
- 2-Year No-Leak Plumbing Warranty
- 2-Year Component Warranty

## EMERGE™ COLD PLUNGE

- 5-Year No-Leak Shell Warranty
- 5-Year Shell Surface Warranty
- 3-Year EcoTech® Cabinet Warranty
- 3-Year No-Leak Plumbing Warranty
- 3-Year Heat Pump Warranty
- 3-Year Component Warranty
- 2-Year LED Lighting System Warranty
- 2-Year Water Sanitation Warranty

To read the full warranty specifications for each of our spa models, visit [CalderaSpas.com/owners-corner/warranty](https://CalderaSpas.com/owners-corner/warranty)





### Mixed Sources

Product group from well-managed forests, controlled sources and recycled wood or fiber  
www.fsc.org Cert no. XXX-XXX-XXX  
© 1996 Forest Stewardship Council

We print our brochures on only Forest Stewardship Council (FSC) Paper. Printed in the USA on recycled paper that contains 10% post-consumer waste and is FSC certified. FSC ensures that the paper in our brochures contain fiber from well-managed and responsibly treated forests. Please pass this brochure on or recycle again.



CALDERASPAS.COM

@CALDERASPAS | #CALDERASPAS



©2025 Watkins Wellness, 1280 Park Center Drive, Vista CA 92081. All rights reserved. Acquarella, AdaptaFlo, AdaptaSage, Advent, Atlas, Aventine, Caldera, Caldera Diagnostic Resource, Cantabria, Celio, Come to Life, ComfortGuard, Connexion, CoolZone, EcoTech, EcstaSeat, EnergyPro, Euphoria, Euro-Pulse, FiberCor, Florence, Foot Ridge, FreshWater, Geneva, Hot Tub Circuit Therapy, Kauai, LumbarSage, Makena, Marino, Martinique, Monarch, Mystique, Niagara, OrbiSage, Palatino, Paradise, ProLift, Provence, Pure Comfort, Pure Performance, Pure Style, Q Chamber, Ravello, ReliaFlo, Reunion, Salina, Seychelles, Sole Soothers, SpaGlo, Tahitian, Tarino, UltraMassage, UltraMasseuse, Utopia, Vacanza, Vanto, VersaSage, VirtualValet and 20-Minute Renewal are trademarks of Watkins Wellness. Delta is a trademark of Masco Corporation of Indiana. Behr is a trademark of Behr Process Corporation. Specifications subject to change without notice. Models, features and electrical requirements may vary by country. U.S. Patents; #5,819,332; 5,924,850; 6,195,811; 6,381,766; 6,859,952; 7,160,446; 7,219,690; 7,490,370; 7,671,994; 7,698,754; 6,381,766B1; D543282; D600816; D616104; D616105; D616999; D641486; D641889; D643539; D649256; D657881 and other patents pending.



PN63531 Rev G